

Wideband Dual-Polarised Omni Antenna

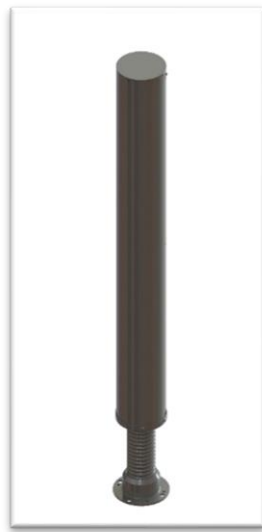
1350 – 2310 MHz

VERSION: 1.3

Product Code: OMNI-A0241



OMNI-A0241



OMNI-A0241-02

SPECIFICATIONS:

Product codes:	
OMNI-A0241	MIMO antenna with mast mounting bracket
OMNI-A0241-02	MIMO antenna with spring base
Electrical:	
Frequency range	1350 – 2310 MHz
VSWR	< 2.0:1
Gain	> 5.5 dBi (typical)
Azimuth ripple	
HP	< 1.5 dB
VP	< 2.5 dB
Port-port isolation	> 40 dB
Feed power handling	10 W
Polarisation	Horizontal and vertical
Nominal input impedance	50 Ω
Connectors	2 x N-type female
Groundplane requirements	Groundplane independent
Mechanical:	
Dimensions:	
OMNI-A0241	Ø120 mm x 1100 mm
OMNI-A0241-02	Ø120 mm x 1250 mm
Total mass:	
OMNI-A0241	< 2.9 kg
OMNI-A0241-02	< 6 kg
Mounting method	Mast-mounted
Environmental: designed to meet the following specifications	
Wind survival	Designed to withstand 160 km/h
Temperature range	Designed to withstand -30 °C to +70°C
Ingress protection	IP65

PRODUCT FEATURES:

- Collinear design gives improved gain
- Low VSWR across the band
- Rugged and lightweight

APPLICATIONS:

- Communications
- Monitoring

PRODUCT DESCRIPTION:

The OMNI-A0241 is a 1.35 to 2.31 GHz dual-polarised omni-directional collinear antenna with groundplane independent radiator and wideband, high-gain performance.

The antenna utilises two collinear dipole arrays with integrated balun, making it groundplane independent and suitable for use on a mast.

Wideband Dual-Polarised Omni Antenna

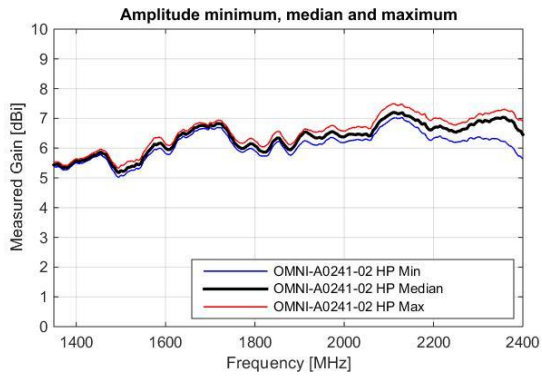
1350 – 2310 MHz

Product Code: OMNI-A0241

VERSION: 1.3

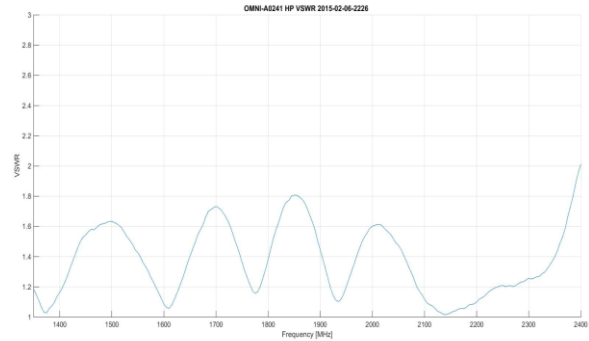
GAIN:

HP:

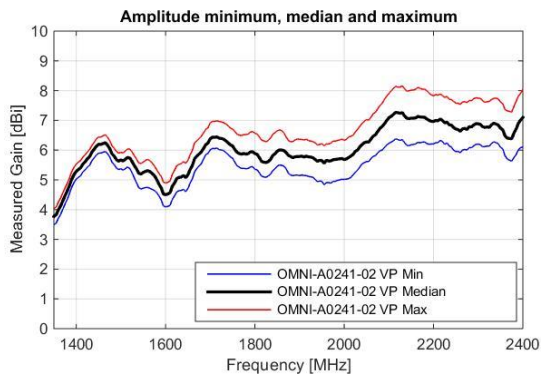


VSWR:

HP:



VP:



VP:

